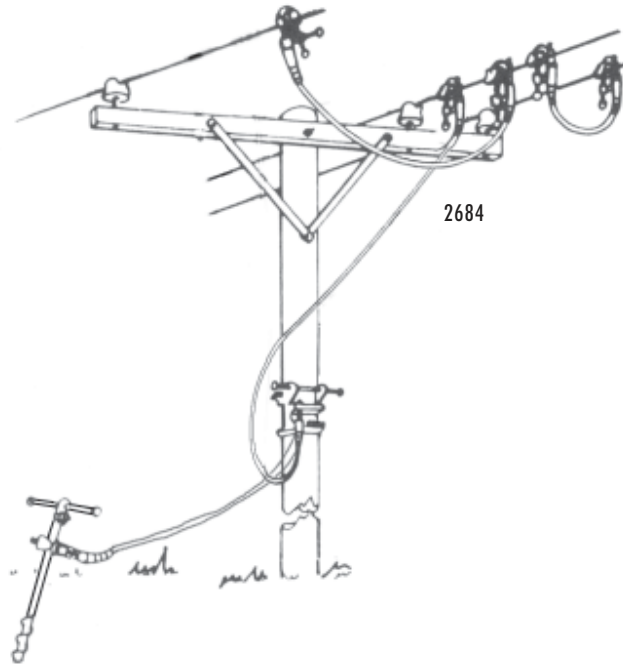


GROUNDING SETS

For Special Applications

Listed are some typical complete personal protection ground sets for common line construction. These sets, although practical for many applications, are shown as a guide to help determine individual system needs and for ease of ordering. Variations of these sets may be requested to meet specific situations or user preferences. Your local Salisbury representative can answer any questions you have on personal protection grounding needs and applications.



Cat. No.	Description	ASTM Grade	Weight ea. lbs. (kgs)
COMPLETE 3 PHASE DELTA			
2684	2 ea. #20880 Contact Bar 7 ea. #1895 Serrated Aluminum "C" Clamp 1.5" 84 ft. #2637 1/0 Cu. Black Cable, 4 pr. #2027 Ferrules 2 ea. #1928 Hanger Studs, 1 ea. #2654 Storage Bag 1 ea. #2103 Screw Ground Rod	2	63.5 (28.8)
4249	2 ea. #20880 Contact Bar 7 ea. #2531 Smooth Aluminum "C" Clamp 795 KCM 86 ft. #2637 1/0 Cu. Cable, 4 pr. #2027 Ferrules 2 ea. #2537 Hanger Studs, 1 ea. #2654 Storage Bag 1 ea. #2103 Screw Ground Rod	2	63.5 (28.8)
COMPLETE 4 WIRE WYE			
4276	1 ea. #20880A Contact Bar 7 ea. #2531 Smooth Aluminum "C" Clamp 795 KCM 32 ft. #2637 1/0 Cu. Cable, 4 pr. #2027 Ferrules 3 ea. #2537 Hanger Studs, 1 ea. #2654 Storage Bag	2	34 (15.4)